



Creekview Ranch Middle School
2010 Support Personnel Accountability Report Card (SPARC)
 “A continuous improvement document sponsored by the
 California Career Resource Network and the Los Angeles County
 Office of Education”



Dry Creek Joint Elementary School District

Creekview Ranch Middle School • 8779 Cook Riolo Road • Roseville, CA 95747 • 916.770.8845 • 916.772.4145 Fax

Principal: George Tsai Assistant Principal: Colleen Clark Counselors: Jaime Perry & Jillian Glende

Website: www.drycreek.k12.ca.us School Year: Modified Traditional Grades Levels: 6-8 Enrollment: 720

Principal’s Message

Creekview Ranch Middle School (CRMS) opened its doors in 2008. I am proud to say that our Student Support Personnel Team (SSPT) has created a safe and caring school that supports students in their academics, personal/social needs, and prepares them for high school and postsecondary options. Our SSPT is a partnership of families, community members, certificated educators, and classified staff within the Roseville, Antelope and Dry Creek communities. The SSPT plays a vital role in creating a safe, welcoming learning environment which encourages student connectedness, responsibility, accountability, self-esteem and appreciation of our diverse student population. Creekview’s SSPT is actively engaged in all aspects of student performance. The Counseling Department Guidance Plan is founded on American School Counseling Association’s (ASCA) National Standards for School Counseling. It develops annual goals focused on college and career readiness, personal/social development, and monitoring of student performance in meeting promotion requirements. As an integral part of the Single Plan for Student Achievement document, the counseling department revises and sets improvement goals each year. Two improvement goals set this year are 1) counselors to do “make up” sessions for students who are absent during the Six Year Planning workshops, 2) create and implement a comprehensive student-driven Conflict Management Program. We continue to have ongoing SSPT articulation and collaboration to ensure that all of our students’ academic, career goals, social and emotional needs are addressed. This is our first Support Personnel Accountability Report Card (SPARC) and it will become part of the site’s Single Plan for Student Achievement document.

Student Support Personnel Team

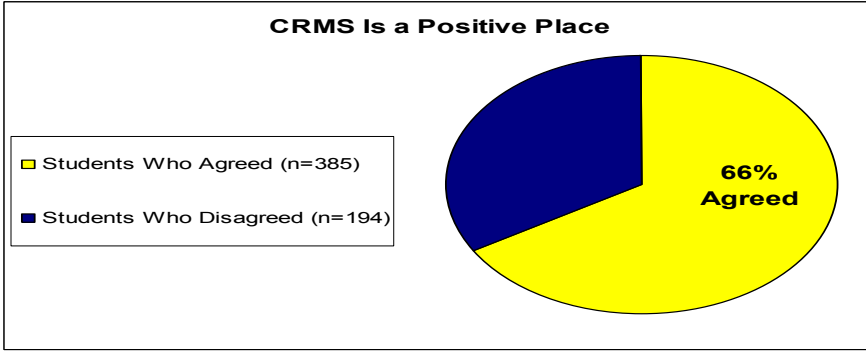
Creekview’s certificated SSPT consists of the following members: school psychologists, a school nurse, special education program specialists, administrators, club advisors, and school counselors who play an important role in creating an equitable student support system. These team members hold appropriate credentials and meet the No Child Left Behind (NCLB) guidelines for highly qualified staff. Other classified staff who actively support the SSPT include school office technicians, campus supervisors, and parent/community volunteers. In order to continue to provide responsive services our members also hold memberships in several professional organizations such as: American School Counseling Association, American Speech-Language and Hearing Association, California Speech-Language-Hearing Association, California Teachers Association, Association of California School Administrators, National Association of School Psychologists. CRMS actively participates in Professional Learning Communities (PLC) to assess and respond to our student needs.

Student Support Personnel Team Highlights

Certificated	Experience	Education/Credentials
Administrators (2) Counselors (2) School Psychologists (2) Speech & Language Pathologist (1) Nurse (1)	28 Years 11 Years 42 Years 19 Years 9 Years	Bachelors Degrees, Masters Degrees, Administrative Services Credentials, Multiple/Single Subject Teaching Credentials, Pupil Personnel Services Credentials in School Counseling and School Psychology, Supplemental Art Teaching Credential, Cross-cultural, Language and Academic Development (CLAD) Certificates, National Certification in School Psychology, School Nurse Credential, Registered Nurse, Clinical or Rehabilitation Services Credential, California Speech-Language Pathology and Audiology License
Classified		
Secretary (1) Middle School Clerks (2)	14 Years 19 Years	Bachelors Degrees, Secretarial Administrative Credential, High School Diplomas, Communications Certification, Some College

School Climate and Safety

CRMS is a safe and caring school; our student support system is dedicated to providing our students a school climate where they can learn in a safe and supportive learning environment. The SSPT infuses the 40 Developmental Assets for Adolescents with their students to help develop the building blocks for healthy development into caring and responsible citizens. Our counselors train and monitor student mediators for our new Conflict Management Program to encourage students to solve concerns with their peers in a safe environment while learning conflict resolution skills. Further, our school has a variety of teacher/counselor advised student clubs which focus on community service and academic excellence such as California Junior *(over)*

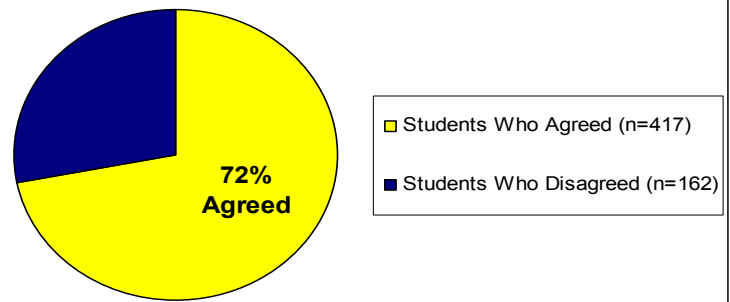


In a 2009 Campus Climate survey, 66% of our student population felt as though CRMS is a positive place.

(Continued from page 1) Scholarship Federation (CJSF) and the student-based program Where Everybody Belongs (WEB). The Second Step bullying prevention program is implemented through exploratory classes and through counselor presentations. Although CRMS is a new school, the SSPT is proud to include the SPARC in the School Safety Plan which is reviewed by the School Safety Committee and School Site Council. This document will be submitted to the Dry Creek Joint Elementary School District Board of Trustees for approval in the spring of 2010.

(Graph on right) A survey in 2009 demonstrated that 72% of CRMS students feel “they are treated fairly and with respect regardless of race, language or disability” amongst their peers and educational staff.

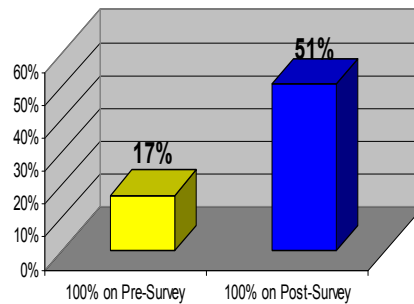
Students Feel They are Treated Fairly and With Respect Regardless of Race, Language or Disability



Student Results As indicated earlier, our Counseling and Guidance Plan and SSPT goals are founded on ASCA National Standards. Goals are data-driven and evaluated annually to target areas of improvement and prioritize growth goals for the following year. Three examples demonstrating the ASCA National Model are highlighted below:

Academic Domain Standard 2: Students will complete school with the academic preparation essential to choose from a wide range of substantial postsecondary options, including college. Supported by AB1802 funding our credentialed counselor has worked individually with 7th grade students with Far Below Basic (FBB) and Below Basic (BB) California Standards Tests (CST) scores. In 2008-2009 counselors provided students and their parents and information to help increase student CST scores. Students also worked on goal setting and creating Six-Year Academic Plans for grades 7-12. In 2009-2010, we evaluated the effectiveness of these meetings and found that 38% of the student CST scores increased by one or more proficiency levels from 2008 to 2009.

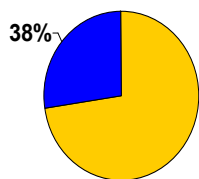
Increase in Student Awareness of Middle School and High School Graduation Requirements as Well as Postsecondary Options



Personal/Social Domain Standard 7: Students will acquire the attitudes, knowledge and interpersonal skills to help them understand and respect self and others. WEB is a middle school transition program that trains older students to be leaders on campus while mentoring incoming 6th graders. A recent survey showed that 91% of 6th graders noticed that WEB Leaders set good examples on campus. Through training, our WEB leaders acquired active listening skills, problem solving abilities, and we expect them to model appropriate behavior while at school. As a direct result of our training and expectations for model behavior, 95% of our WEB leaders have maintained a perfect behavior point total of 100 and continue to set a good example for our 6th graders.

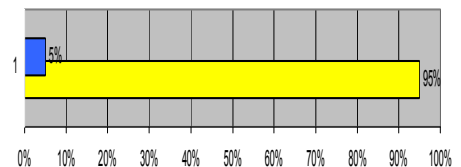
Career Domain Standard 6: Students will understand the relationship between personal qualities, education training and the world of work. This year, all students in 7th and 8th grade participated in workshops to create Six-Year Academic Plans to prepare for postsecondary options including college, career, or military service. A survey given on this information prior to the presentations showed that only 17% of students were aware of the necessary middle school and high school requirements to acquire postsecondary education and career choices. After evaluating the post-survey, there was an increase to 51% in student awareness of these requirements.

CST Score Increases From 2008 to 2009



7th Grade FBB & BB Scores in 2008 (n=58)
Increased Scores by 1 or More Proficiency Levels in 2009 (n=22)

WEB Leaders Model Appropriate Behavior on Campus



WEB Leaders With Less Than 100 Behavior Points This Year (n=5)
WEB Leaders With 100 Behavior Points This Year (n=37)

Community Partnerships & Resources

The CRMS Student Support Personnel Team is successful because we have forged alliances with community members to help bridge the school-to-community gap. Some of the ways community partners contribute to the SSPT’s success are through providing specialized consultations, mental health services, health insurance, professional speakers, donations, and college/academic information. These services support the academic, career, and personal/social needs of our students. The following are only some of the community resource partners we collaborate with:

Academic Resources CSU Sacramento Academic Talent Search, Roseville Joint Union High School District, Placer County Office of Education, Advancement Via Individual Determination (AVID) Institute, Gifted and Talented Educational Program, PowerSchool, Parent Teacher Association, CJSF

Career Resources Roseville Police Activities League, Roseville Joint Union High School District’s College and Career night, A-G Requirements for College, Roseville Chamber of Commerce, NFL Speakers

Personal/Social Resources Love and Logic, Parent Project, WEB, Second Step Bullying Prevention, Teens Roseville Live, City of Roseville Parks & Recreation, Placer County Assistance League, Lens Crafters, Placer County Health Department, California Children’s Services, District Homeless & Foster Youth Services, Placer County Child Protective Services

If you are interested in more information regarding our student support services program or would like to become involved, please contact Jillian Glende at (916)770-8845 or by e-mail at jglende@drycreek.k12.ca.us.